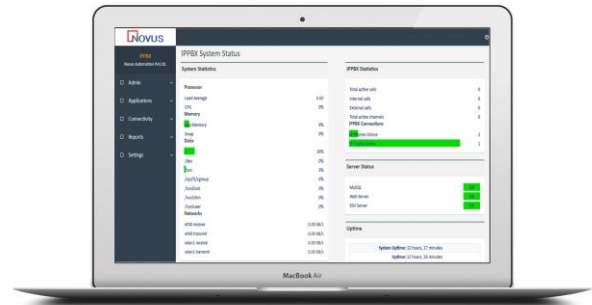


## SIP SERVER

# OVERVIEW

NOVUS IP PBX appliance is designed to bring enterprise-grade voice, video, data, and mobility features to small-to-medium businesses (SMBs) in an easy-to-manage fashion. By incorporating industry-leading features, the IP PBX offers quick and easy setup and deployment using the web-browser user interface.



## About System

The IP PBX allows businesses to unify multiple communication technologies, such as comprehensive voice, video calling, audio conferencing, video surveillance, data tools, onto one common network that can be managed and/or accessed remotely.

## Features

- ✓ Excellent Video and Audio communication.
- ✓ Inbuilt Card details record (CDR).
- ✓ Inbuilt Call recording feature
- ✓ Caller ID and follow me support.
- ✓ Compatible with 3<sup>rd</sup> party VoIP providers.
- ✓ Support PSTN/PRI integration.
- ✓ Multiple trunk and Ring group are supported.

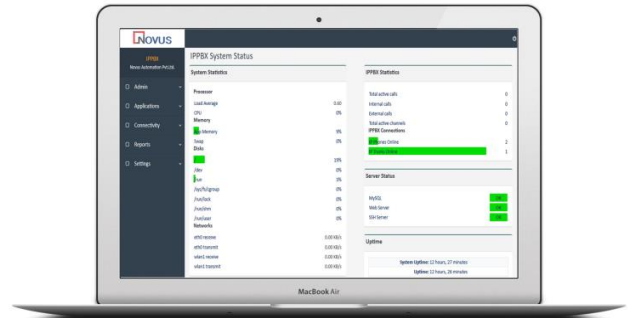
E-Mail @ [sales@novusapl.com](mailto:sales@novusapl.com)

[www.novusapl.com](http://www.novusapl.com)

# Server or Embedded Your Choice!

## Server Model:

For server model, software is distributed as a complete package in the executable format. It can be easily imported into Linux operating system such as Ubuntu. Server distribution is tailor-made for large organization handling humongous amount of data.



## Embedded Model: -

In this model, software is delivered on an embedded mini-computer. The ready to use solution can be installed at a drop of a hat by installer. The system can be made running by connecting to power supply and Ethernet cable. Embedded system distribution is ideal for SME. Initial cost is minimized as there is no requirement for a dedicated server.

E-Mail @ [sales@novusapl.com](mailto:sales@novusapl.com)

[www.novusapl.com](http://www.novusapl.com)

# Features

## Unified Video & Audio Communication

IP PBX sip server allows unified video & audio communication. User can communicate through, calls, video and audio conferencing etc. There is also an option to share files over the IP network. Result of unified communications is increased productivity because of collaboration in real time.

## Flexible SIP user support

- SIP server provides flexible user support for the end customer. Quite a large no. of companies still pays separately for voice and data connection. It makes much more sense to consolidate the entire communication by switching to Novus SIP based telephony system. By using SIP, voice is treated as just other application on the network like mail, web page etc.

## Call Detail Record (CDR)

SIP Server call detail record highlights the key metadata about how the business phone system is being used. CDR is extremely useful for reporting and billing purposes. The metadata that is provided are as follows- date & time of the call, duration of the call, source and destination phone no., type of calls (inbound, outbound, toll-free). Essentially, CDR provides a bird's eye view of how a phone system is being used.

## Call Recording

Call recording is another useful business feature. With SIP server all the calls are auto recorded and saved on the server database. The database is secure from physical damage and is accessible from any part of the world. Calls saved in call log are available for reference in the future. VOIP call recording has an edge over the traditional method of call record which is vulnerable to physical damage and regular wear & tear.



## Voicemail

Voicemail system is used in businesses for sending storing and retrieving audio messages, similar to an answering machine. Every extension in a phone system is normally linked to a voicemail box. Caller listens to a pre-recorded message to an unanswered call. Novus offers a complete voicemail solution that provides unified communication by allowing voicemail to be forwarded to user's email inbox.

## Trunk Support

SIP server provides trunk support for businesses. With trunk support, multiple signals are carried simultaneously to provide network access between two points. SIP trunk support cuts out the necessity of physical connection to a phone company. Signals between the network can convey any type of communication data.

## 3<sup>rd</sup> Party VoIP Integration

SIP server can be seamlessly integrated with any 3<sup>rd</sup> party VOIP phone system. Integration VOIP with SIP server ensures that data is being used back and forth. Novus SIP server allows one click 3<sup>rd</sup> party VOIP integration.

## Backup and Restore

SIP Server makes sure that all the data are securely backed up. In case of any aberration, organization data can be restored to its original form. Backup and restore features another layer of security in the existing system.

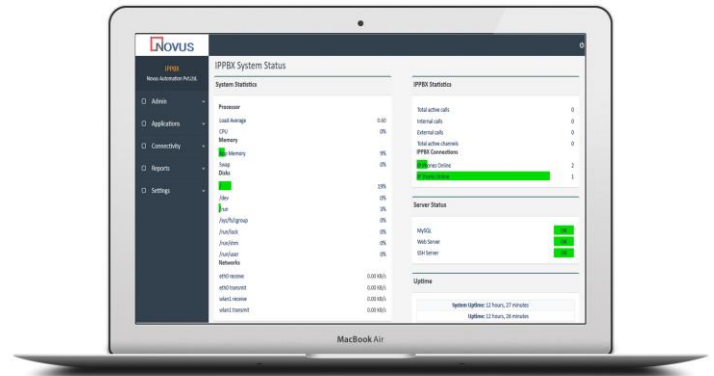


## Web Management Interface

Novus -ISM equipped with built an innovative web-based management interface.

Existing software can be immaculately scaled to higher or lower level based on requirements.

User based role can be assigned for multi-tier web-based software access.



## Software Specifications

Parameters	Description
<b>Video Codec Supported</b>	H264, H263, H263+
<b>Audio Codec Supported</b>	ADPCM, G.711 (A-Law & $\mu$ -Law), G.722, G.723.1 (pass through), G.726, G.728, G.729, GSM, iLBC (optional)
<b>DTMF Methods</b>	In Audio, RFC2833, and SIP INFO
<b>Network Protocols</b>	TCP/UDP/IP, RTP/RTCP, ICMP, ARP, DNS, DDNS, NTP, SSH, HTTP/HTTPS, SIP (RFC3261), SRTP, TLS,
<b>Voicemail</b>	Voicemail, Voicemail-to-Email functionality
<b>Conference</b>	Yes, Audio
<b>Call Recording</b>	Yes, Audio
<b>Other Features</b>	Call detail record (CDR) report, Channel usage reports, Caller ID, Multiple trunk support, Follow-me, Ring groups, Paging and intercom, VOIP Provider Configuration. call forward, call transfer, DND etc.

E-Mail @ [sales@novusapl.com](mailto:sales@novusapl.com)

[www.novusapl.com](http://www.novusapl.com)



## Hardware Requirements for Server Model

Parameters	Description
CPU	Intel Xeon E3 Or Higher
RAM	8 GB
HDD	500 GB OR More as per requirements
Network Interface	1x 10/100/1000 Mbps
SIP Users	Up to 5000 (Hardware configuration will differ for no of users)
Operating System	UBUNTU 14.04 or Higher
Database	My SQL
Management Interface	Web Based Management (Chrome, Mozilla, Edge)
System Architecture	Web Based, Multi-tier system

\*Specs may change as per SIP user configuration

## Hardware Specifications for Embedded Model

Parameters	Description
Model	NS-ISM
CPU	Arm, Quad Core @ 1.8GHz
Memory	2 GB
Storage	16 GB eMMC
Display	1×HDMI, 1x VGA (Not in use, for Console only)
Communication Interface	TCP-IP, 1x 100/1000 LAN
USB	2x USB
Working temperature	-20~+50°C
Power	5 V DC
Size	126 mm× 91.3mm

E-Mail @ [sales@novusapl.com](mailto:sales@novusapl.com)

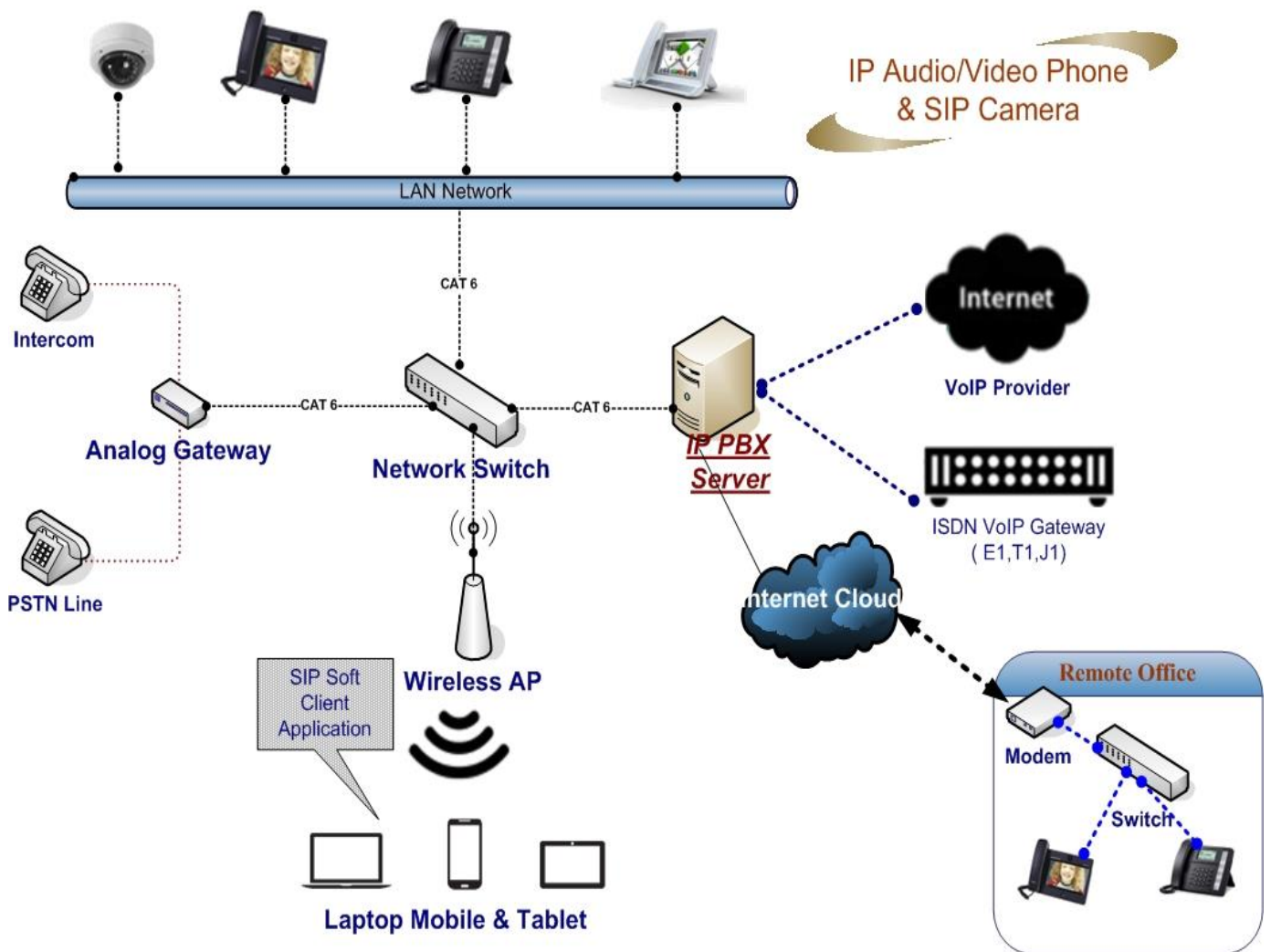
[www.novusapl.com](http://www.novusapl.com)





Parameters	Description
SIP Users	Up to 500
OS	Embedded Linux
Database	My SQL
Management Interface	Web Based Management (Chrome, Mozilla, Edge)
System Architecture	Web Based, Multi-tier system

## Network Architecture:



**Disclaimer:** Brief product specifications are mentioned, that may change without prior notice, please check with OEM before purchase. Images are shown for reference only; actual product may differ due to product enhancement.

E-Mail @ [sales@novusapl.com](mailto:sales@novusapl.com)

[www.novusapl.com](http://www.novusapl.com)

