



FLAP BARRIER

Entrance Management System

Model : NS-FS9-V230

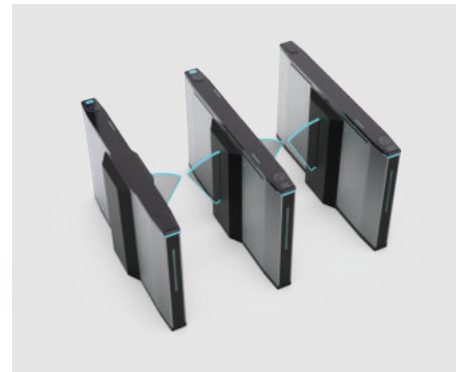


Flap Barrier NS-FS9-V230

Overview



Flap Barrier is a pioneer entrance control device. It consists of flaps that permit or restrict entry. Flap barrier is widely used in secure environments like office buildings, airports, and transportation stations. Owing to its sleek design and top notch quality, the offered gate is one of the most sought-after products for crowd management.



Features

- ▶ Thickness: Top: 1.2mm, Body: 1.2mm for robustness.
- ▶ Supports single and bi-directional movement.
- ▶ Standard 550mm channel width for easy access.
- ▶ 4 pairs of active infrared intrusion detectors.
- ▶ AC110~220V±10% power input accepted.
- ▶ Triple-color LED and buzzer for guidance.

Benefits

- ▶ Elegant design enhances aesthetics with a modern appearance.
- ▶ Constructed from sturdy SUS 304 steel ensures durability.
- ▶ Dual thickness ensures structural strength.
- ▶ Nominal maintenance cost and easy to install design.
- ▶ Build to stand tough atmospheric conditions.

Technical Specifications

Product Size	1600*300*980mm
Material	SUS 304 stainless steel
Thickness	Top:1.2mm+body1.2mm
Passage Direction	Single directional/Bidirectional
Standard Channel Width	550mm
Sensor	4 pairs of active infrared intrusion detector
Throughput Rate	30~35p/m
Reaction Time	0.2S
Driving Voltage	DC24V 4.2A
Working Temperature	-20~+70 C
Power Input	AC 110~220V±10%
Working Temperature	-20~+70 C
Sensor	3 pairs of active infrared intrusion detector
Motor	Brushless DC Motor
Mechanism	Full Height Flap Gate Mechanism
Back up power	Supercapacitor (12V/3A)
Acoustic Alarm	Buzzer Alarm
Weight	≤ 60 kg
LED	Triple Color LED
IP Rating	44
MCBF	6 + Million
Torque motor	Higher



Disclaimer: Brief product specifications are mentioned, that may change without prior notice, please check with OEM before purchase. Images are shown for reference only; the actual product may differ due to product enhancement.