



# SWING BARRIER

## Entrance Management System

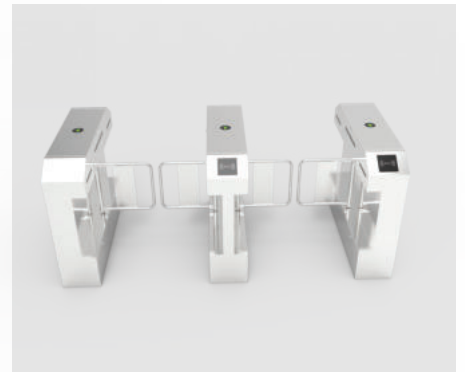
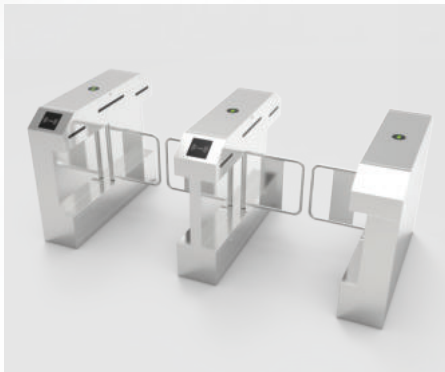
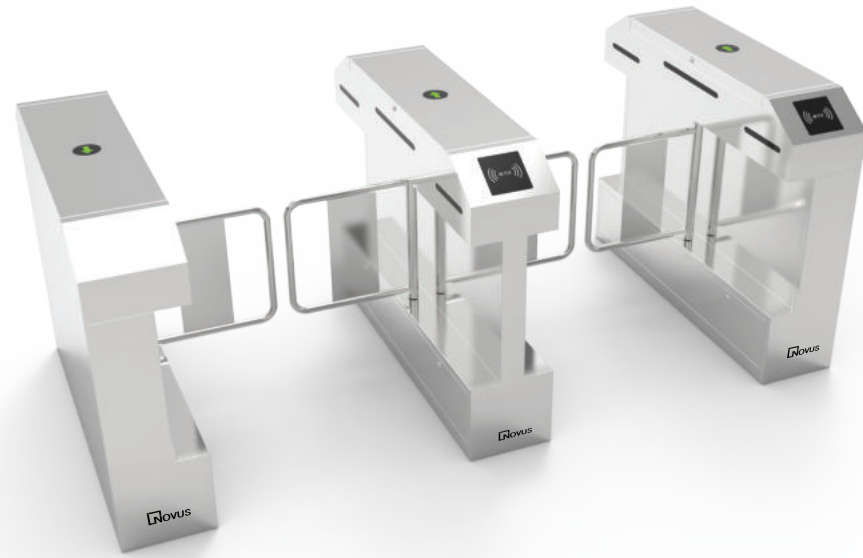
Model : NS-SS9-V110



# Swing Turnstile NS-SS9-V110

## Overview

We provide a Swing Turnstile that uses a swinging barrier to manage pedestrian entry. It has got seamless surface finish and enchanting appearance, making it one of the most sought-after products in the marketplace. Swing Turnstile is commonly used in various areas, including office buildings, public stations, corporate offices, and among others



## Features

- ▶ Compact Dimensions of for space optimization.
- ▶ 600mm (≤1200mm optional) for flexibility.
- ▶ Durable SUS 304 with precise thickness.
- ▶ Driven by powerful Brushless DC Motor.
- ▶ Rapid 0.2s response ensures efficient throughput
- ▶ 4 pairs of active infrared detectors enhance security

## Benefits

- ▶ Active infrared detectors prevent unauthorized access.
- ▶ Supports both single and bi-directional passage
- ▶ Stainless steel build ensures long-term performance.
- ▶ LED displays guide users with clear direction.
- ▶ Adjustable width for diverse access needs.
- ▶ Brushless motor and Anti-collision Integrated Mechanism

## Technical Specifications

Product Size	1200*280*960mm
Material	SUS 304 stainless steel
Material Thickness	Top:1.2mm+body1.0mm
Pass Width	600mm (≤1200mm optional)
Passage Direction	Single directional / Bi-directional
Throughput Rate	30p/m
Reaction Time	0.2S
Acoustic Alarm	Buzzer Alarm
LED	Single/ Triple color LED (optional)
Driving Voltage	DC24V 6.25A
Power Input	AC 110~220V±10%
Working Temperature	-20~+70 C
Sensor	4 pairs of active infrared intrusion detector
Motor	Brushless DC Motor
Mechanism	Brushless Anti-collision Integrated Mechanism
Back up power	Supercapacitor (12V/3A)
Indication	LED direction indication
Weight	≤ 60 kg
IP Rating	44
MCBF	6 + Million
Torque motor	Higher



**Disclaimer:** Brief product specifications are mentioned, that may change without prior notice, please check with OEM before purchase. Images are shown for reference only; the actual product may differ due to product enhancement.