



TRIPOD TURNSTILE

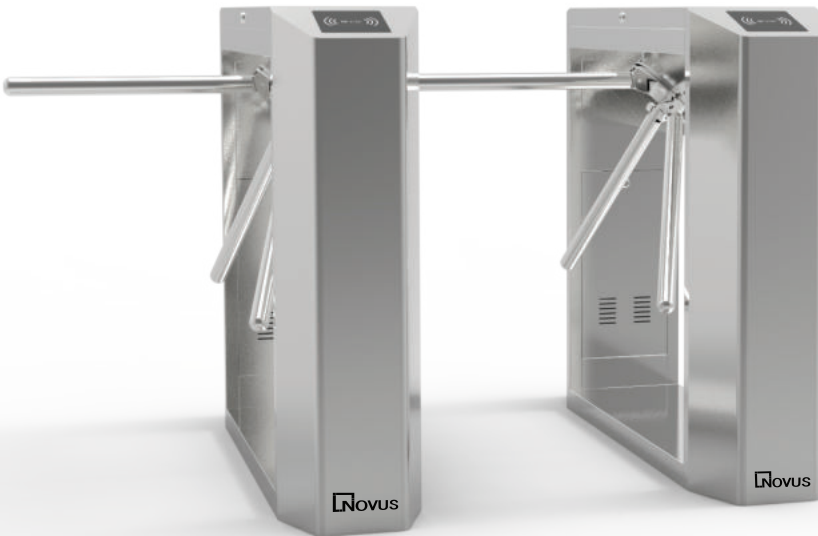
Entrance Management System

Model : NS-TS9-V130

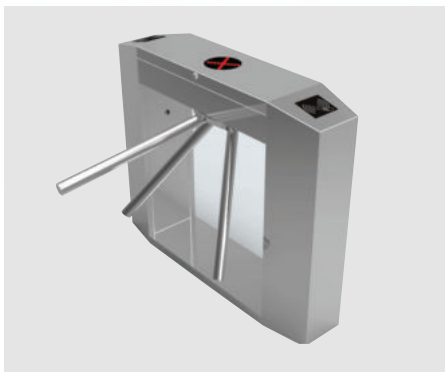


Tripod Turnstile NS-TS9-V130

Overview



We offer cutting-edge Tripod Turnstile, which is a physical entrance control device typically employed to manage pedestrian traffic. Consisting of three rotating horizontal arms, it permits or restricts entry based on authorization. Widely used in public areas, transportation hubs, and secure facilities, Tripod Turnstile enhances security and streamlines crowd management in diverse environments.



Features

- ▶ 550mm pass width for easy and smooth access.
- ▶ Offers single or bi-directional passage control.
- ▶ SUS 304 stainless steel construction with durable thickness.
- ▶ DC24V 3A semi-automatic driving mode for enhanced efficiency.
- ▶ 0.2S reaction time with clear LED indication.
- ▶ Compact design for efficient use of space.

Benefits

- ▶ Improved access control and monitoring.
- ▶ Compact design maximizes available floor space.
- ▶ Wide passageway for easy, comfortable entry.
- ▶ Stainless steel construction ensures long-lasting reliability.
- ▶ Works with AC110~220V±10% power input.
- ▶ Sturdy construction for unmatched durability.

Technical Specifications

Product Size	1200*280*980mm
Material	SUS 304 stainless steel
Material Thickness	Top:1.2mm+body1.0mm
Throughput Rate	30p/m
Pass Width	550mm
Reaction Time	0.2S
Driving Voltage	DC24V 3A
Power Input	AC110~220V±10%
Working Temperature	-20~+70 C
Driving Mode	Semi-auto
Indication	LED direction indication
IP Rating	44
Weight	≤ 60 kg
MCBF	6 + Million
Torque motor	Higher
Motor	DC Brushless



Disclaimer: Brief product specifications are mentioned, that may change without prior notice, please check with OEM before purchase. Images are shown for reference only; the actual product may differ due to product enhancement.