

Novus Automation Pvt. Ltd

Product
Catalogue



NOVUS
Innovating Possibilities

www.novusapl.com

About Us

With a strong belief in the transformative power of technology, Novus Automation Pvt. Ltd. stands proud as a pioneering manufacturer, distributor, and solution provider, committed to delivering innovative and reliable systems in the domains of access control, entrance automation, parking management, traffic control, and network monitoring. We offer an extensive portfolio of products and solutions designed to enhance security efficiency, and convenience across various industries.

The company commenced its operations in 2015, and since then we have been thriving to help businesses achieve their full potential by utilizing the power of automation. We understand that every business has unique requirements, therefore, we offer customized solutions tailored to meet specific needs and objectives.

Our company strives to provide businesses with reliable and efficient hardware solutions that help them improve their productivity, reduce costs, and achieve their business objectives.

Vision

Our vision is to be a leading provider of innovative and advanced solutions that meet customers' specific needs across industries of all sizes. We strive to leverage the latest technologies to design and develop systems that are efficient, ergonomic, and easy to use.

Mission

At Novus Automation Pvt. Ltd., our mission is to provide our customers with the highest quality products and services that exceed their expectations. We are constantly striving to develop intelligent embedded systems, products, and services that meet the evolving needs of our customers.

Access Control system



2/4 Door With Box & Supply | NS-AC-002/004



Technical Specifications

Management	Web based management
Door Control	2Door 4 Reader (Weigand) 4 door 4 reader (Weigand)
User Capacity	20000 users
Functions	Advance access Control functions
Software	Windows based software

Standalone With Keypad | NS-ACS-002



Technical Specifications

User	2000 users and cards/pin support
Interface	WG 26 input/output
Card Type	EM proximity card support
Material	Metal case
Keypad	Backlit keypad

Face Recognition Device | NS-FRS1-V617M-P



Technical Specifications

User Capacity	6,000
Face Capacity	6,000
Card Capacity	10,000
Password Capacity	6,000
Screen Size	4.3 Inch LCD touch screen
Camera	2-MP CMOS HD dual-lens camera
Communication	Cloud ,LAN, USB
IP Rating	IP65
Lrg Capacity	Yes

5- Inch Face Recognition Access Control Terminal | NS-FRS13-V1227M



Technical Specifications

Processor	Dual core ARM Cortex.A7
Face Capacity	12,000
Card Capacity	12,000
Storage capacity	3,00000 capture records
Fingerprint capacity	3,000
Camera	2MP, 1920* 1080
Recognition time	Less than 0.3 seconds
Operating temperature	Operating temperature
Recognition height	1.2-2.3 meters, angle adjustable

8- Inch Face Recognition (Access Control) Terminal | NS-FRS13-V331M



Technical Specifications

User Capacity	25,000
Face Capacity	25000
Card Capacity	10,000
Event Storage Capacity	30,0000
Display	8 Inches IPS HD 1200*800
Camera	2 MP Dual Camera, 1920*1080
Power	12V 2A DC
IP Rating	IP65
Card Support	Yes, 13.56 MHz Mi-Fare

Proximity EM/IC Card Reader | NS-R200-E/M



Technical Specifications

Card Type	125 KHz & 13.56 MHz card reader
Data Output	Weigand 26/34-bit output
Weather Proof	Waterproof design
Access Control	Compatible with all standard access control system
LED Indicator	Power Indicator, Status
Audio Alert	Beeper

Card Based Access Control Device | NS-IS1-V243-E/M



Technical Specifications

Working Voltage	DC12-24V
Capacity Card Reading	2000 users
Communication Interface	Wi-Fi
Access Control	Build-in
Door Relay Time	0-99S(Adjustable)

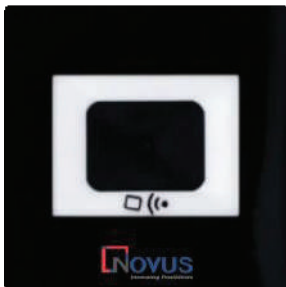
Card Reader | NS-RS1-V141-E/M



Technical Specifications

Reading Frequency	125 KHz & 13.56 MHz
Reading Range	<50mm(<=1.97")
Radio Frequency	ISO11784/11785/ISO14443-A
Keypad	No keypad
LED Indicator	Power Indicator, Status Indicator
IP65	Standard
Audio Alert	Beeper

QR Code Reader | NS-R100-QM



Technical Specifications

Product	QR Code Access Reader
Card Type	13.56 MHz Mi-fare card
Reading Distance	0-7 CM
Interface	RS-485, RS232/Weigabd (Optional)
Decoding Support	QR/Barcode On paper / Mobile

Proximity EM Card with Keypad Reader | NS-R300-EP



Technical Specifications

Card Type	125 KHz Proximity card reader
Operation	Keypad for PIN Operation
Reading Distance	0-7 CM
Interface	RS-485, RS232/Weigabd (Optional)
Decoding Support	QR/Barcode On paper / Mobile

Ultra FP Network Access Controller | NS-CS1-V2270/V4270



Technical Specifications

Fingerprint Capacity	5000
Card Capacity	100,000
Reader	Fingerprint & card reader
Events	Access Control Events : 300,000
Reader	Weigand x 4, RS--485 x 4
Interface	Alarm Input x 4
Door	2 Door / 4 Door

UHF Reader | NS-R5009/12-UHF



Technical Specifications

Frequency	865-867 MHz
Data Interface Events	Wigand 26/34 bits, RS232/RS485, TCP/IP (Optional)
Read Range	Up to 6 meters (NS-R5009-UHF) Up to 10 meters (NS-R5012-UHF)
IP Rating	IP 66
RF Power	30 db Adjustable
Working Mode	Active/answer/trigger mode

BOOM BARRIER





Novus

Novus

BOOM BARRIER | NS-BS11-V60D

Technical Specifications

Arm Optional	Telescopic Arm 4-6m with 2pcs remote control
Traffic Indication	yes
Opening / Closing	1.5 to 6 Sec
Housing Size (In mm)	320*245*985 (W*D*H)
Thickness	1.8 MM
Working Power Supply	220VDC+10%
Working Temperature	40°C 85°C
Motor Power	150 W
Lifting speed	1-6S
IP Rating	IP 54
Relative Humidity	≤85% No Condensation
Remote Control Distance	30 Meter
Color	Grey/Red/Black
Weight	45 KG
MCBF	5 Million

Overview

Boom barrier offers robust security solutions with its compact design and sturdy construction. Operating on a stable 220VDC supply, it can work efficiently in diverse weather conditions. The 150W motor enables quick lifting, while its adaptability to ≤85% humidity and a remote range of 30m enhance its efficiency. It is easy to install and operate.



Motor Type	DC Brushless
Motor RPM	1500r/min
Motor Torque	0.64n.m



Novus

BOOM BARRIER | NS-BS8-V60DI

Technical Specifications

Boom type (Round / Elliptical / Telescopic)	6 Meter Telescopic	Input Interface	Radar and Ground induction coil signals
Boom length	Up to 6 meter Straight Bar	Working Temperature	-25 to + 75
Opening / Closing	2 to 5 Sec	Remote Control Distance	≥ 30 meter
Housing Size (In mm)	300*340*1000 (W*D*H)	MCBF	5 million Times
Housing Material (MS /Steel)	Iron + paint	No. of Springs	1
Motor Type	DC Brushless	When Power off how to open Boom	manual Operation
Motor Power	140 Watt	Arm Direction Change (yesh /No)	No
Motor RPM	1500r/min	Housing Colour	Orange+ Black+grey
Motor Torque	0.64n.m	Weight	40 KG
IP Rating	IP 54		

Overview

Our telescopic boom barrier, with a maximum length of 6 meters, is designed for efficiency. Boasting a powerful DC brushless motor operating at 1500 RPM, it delivers rapid 2 to 5-second opening and closing times. Made up of the finest grade Iron with a anti-corrosive coating of paint, the offered device ensures optimum durability.



BOOM BARRIER | NS-BS8-V60D2

Technical Specifications

Boom type (Round / Elliptical / Telescopic)	6 Meter Telescopic	Input Interface	Radar and Ground induction coil signals
Boom length	Up to 6 meter Straight Bar	Working Temperature	-25 to + 75
Opening / Closing	1.5 to 6 Sec	Remote Control Distance	≥ 30 meter
Housing Size (In mm)	350*260*980 (W*D*H)	MCBF	5 million Times
Housing Material (MS /Steel)	Iron + paint	No. of Springs	1
Motor Type	DC Brushless	When Power off how to open Boom	manual Operation
Motor Power	100Watt	Arm Direction Change (yesh /No)	yes
Motor RPM	1500r/min	Housing Color	Grey - Yellow- Black
Motor Torque	0.64n.m	Weight	37KG
IP Rating	IP 54		

Overview

Boom barrier is an essential security device with versatile applications. Our 6-meter telescopic boom barrier offers rapid 1.5 to 6-second opening and closing times, suitable for various facilities. Its robust iron and painted steel housing, and a powerful DC brushless motor ensure durability and reliability. It also features arm direction change capability, enhancing traffic control.



**ULTRA FAST
AUTOMATIC ELECTRONICS
BOOM BARRIER**
Model - NS-BSI-V36D



**AUTOMATIC ELECTRONIC
BOOM BARRIER**
Model - NS-BSI-V60D



**FENCING BOOM
BARRIER**
Model - NS-BSI-V43D



**ELECTRO-MECHANICAL
FOLDING
BOOM BARRIER**
Model - NS-BSI-V52D



SPRINGLESS BOOM BARRIER

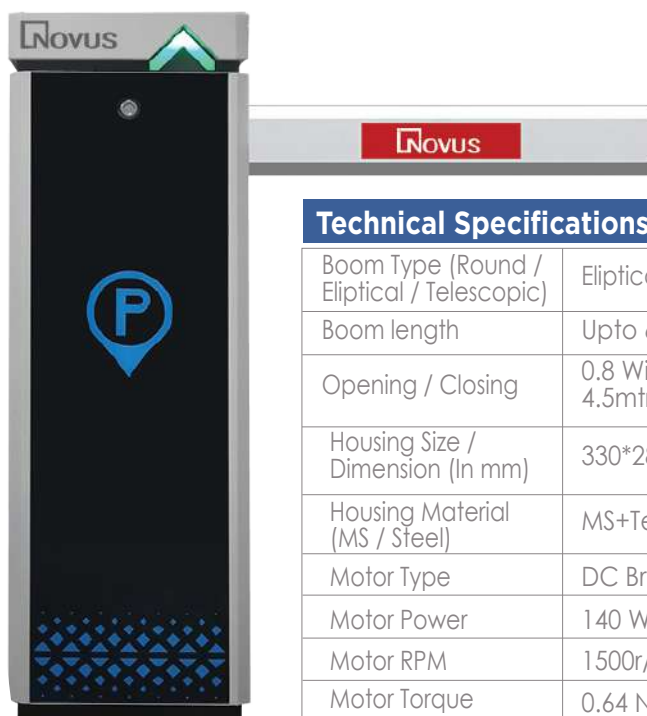
NS-BS3-M214-SL

Technical Specifications

Boom length	4.5 Mtr
Opening / Closing	3 Sec
Housing Size (In mm)	325*220*1000 (W*D*H)
Motor Type	DC Brushless
Motor Power	100 Watt
IP Rating	IP 54
Input Interface	12 Volt Relay Signal
Working Temperature	(-30 to + 80)
Remote control Distance	<=30 mtr
MCBF	6+ Million
Spring	No Spring
Power Off	Auto Open
Arm Direction Change	Easy
Weight	35 KG
Motor Torque	120 NM
Motor RPM	1500r/min

Overview

Springless boom barrier is a versatile security device used to control vehicular access in parking lots, residential complexes, industrial facilities, and commercial areas. It consists of a horizontal bar or arm that can be raised or lowered to allow or restrict entry. It has got a 4.5-meter boom length, featuring a DC brushless motor.



ULTRA FAST BOOM BARRIER

NS-BS7-P416

Technical Specifications

Boom Type (Round / Eliptical / Telescopic)	Eliptical	IP Rating	54
Boom length	Upto 6 Meter	Input Interface	AC
Opening / Closing	0.8 Within 3mtr, 1.5s Within 4.5mtr, 3s Within 6mtr	Working Temperature	-30~+60 C
Housing Size / Dimension (In mm)	330*280*1020mm	Remote control Distance	30 m
Housing Material (MS / Steel)	MS+Tempered Glass	MCBF	10 million times
Motor Type	DC Brushless	No. of Springs	2
Motor Power	140 Watt	When Power Off how to open Boom	A Manual raise is available Inside the cabinet
Motor RPM	1500r/min	Arm Direction Change (Yes / No)	Yes
Motor Torque	0.64 N.M	Housing Colour	Yellow+Black + Grey
Main Axis Output Torque	32/60/120 N.M	Weight	75 KG

Overview

Ultra fast boom barrier is a versatile device designed for various access control applications. Its elliptical boom can extend up to 6 meters, ensuring efficient vehicle access control. With robust construction and advanced features, it offers enhanced security and convenience. It is a resilient and rugged device, therefore, suitable to deploy even in harsh environments.

CURVE ULTRA FAST BOOM BARRIER NS-BS2-P30S2



Technical Specifications

Boom Type (Round / Elliptical / Telescopic)	Telescopic	Motor Torque	0.637N.m
Boom length	max 4.5m	IP Rating	54
Opening / Closing	0.6 to 6 Sec	Input Interface	Relay
Housing Size / Dimension (In mm)	335*270*925mm	Working Temperature	-35~+65
Housing Material (MS / Steel)	cold rolled sheet	Remote control Distance	100m in open place
Motor Type	Servo	MCBF	15+ Million
Motor Power	200W(0.9S) 400W(0.6S)	No. of Springs	4.5m(2pcs), 3m(1pc)
Motor RPM	3000r/min	When Power Off how to open Boom	Manual open
Weight	50 KG	Arm Direction Change (Yes / No)	Yes
		Housing Colour Options	Gray

Overview

CURVE ULTRA FAST BOOM BARRIER NS-BS2-P30S1

With lightning-fast opening and closing speed, curve ultra-fast boom barrier has grabbed eyes of many system integrators. It has got a telescopic design with a maximum boom length of 3-4.5 meters. It offers quick opening and closing times of 0.6 to 6 seconds, with a rugged housing made of cold-rolled sheet material. It can be controlled remotely from up to 100 meters away.

Overview

With lightning-fast opening and closing speed, curve ultra-fast boom barrier has grabbed eyes of many system integrators. It has got a telescopic design with a maximum boom length of 3-4.5 meters. It offers quick opening and closing times of 0.6 to 6 seconds, with a rugged housing made of cold-rolled sheet material. It can be controlled remotely from up to 100 meters away.

Technical Specifications

Boom Type (Round / Elliptical / Telescopic)	Telescopic	Motor Torque	0.637N.M
Boom length	max 4.5m	IP Rating	54
Opening / Closing	0.6 to 6 Sec	Input Interface	Relay
Housing Size / Dimension (In mm)	335*270*925mm	Working Temperature	-35~+65
Housing Material (MS / Steel)	Cold rolled sheet	Remote control Distance	100m in open place
Motor Type	Servo	MCBF	15+ Million
Motor Power	200W(0.9S) 400W(0.6S)	No. of Springs	4.5m(2pcs), 3m(1pc)
Motor RPM	3000r/min	When Power Off how to open Boom	Manual open
Weight	47 KG	Arm Direction Change (Yes / No)	Yes
		Housing Colour Options	Orange



VALUE SERIES



Tripod
Turnstile



Flap
Barrier



Swing
Gate

Vertical Tripod Turnstile | NS-TS9-V110

Technical Specifications

Product Size	420*330*980mm
Material	SUS 304 stainless steel
Material Thickness	Top:1.2mm+body1.0mm
Throughput Rate	30p/m
Pass Width	550mm
Passage Direction	Single directional/Bi-directional
Driving Voltage	DC24V 3A
Power Input	AC110~220V±10%
Working Temperature	-20~+70 C
Driving Mode	Semi-auto
Indication	LED direction indication
Weight	≤ 60 kg
IP Rating	44
MCBF	6 + Million
Tourque motor	Higher
Motor	DC Brushless



Tripod Turnstile | NS-TS9-V120

Technical Specifications

Product Size	1200*280*980mm
Material	SUS 304 stainless steel
Material Thickness	Top:1.2mm+body1.0mm
Pass Width	550mm
Passage Direction	Single directional/ Bi-directional
Throughput Rate	30p/m
Reaction Time	0.2S
Driving Voltage	DC24V 3A
Power Input	AC110~220V±10%
Working Temperature	-20~+70 C
Driving Mode	Semi-auto
Indication	LED direction indication
Weight	≤ 60 kg
IP Rating	44
MCBF	6 + Million
Tourque motor	Higher
Motor	DC Brushless



Tripod Turnstile | NS-TS9-V130

Technical Specifications

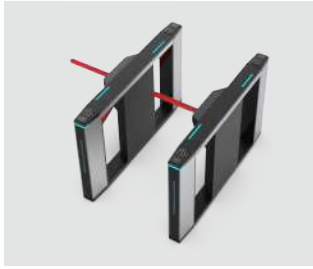
Product Size	1200*280*980mm
Material	SUS 304 stainless steel
Material Thickness	Top:1.2mm+body1.0mm
Pass Width	550mm
Passage Direction	Single directional/Bi-directional
Throughput Rate	30p/m
Reaction Time	0.2S
Driving Voltage	DC24V 3A
Power Input	AC110~220V±10%
Working Temperature	-20~+70 C
Driving Mode	Semi-auto
Indication	LED direction indication
Weight	≤ 60 kg
IP Rating	44
MCBF	6 + Million
Tourque motor	Higher
Motor	DC Brushless



Tripod Turnstile| NS-TS9-V210

Technical Specifications

Product Size	1600*245*980MM
Material	SUS 304 stainless steel +SPCC
Passage Direction	Single-directional/ Bi-directional
Standard Channel Width	550mm
Throughput Rate	30p/m
Driving Voltage	DC24V 3A
Working Temperature	-20~+70 C
Power Input	AC110~220V±10%
Thickenss	1.2mm
Driving Mode	Semi-auto
LED	Dual color LED
Weight	≤ 60 kg
IP Rating	44
MCBF	6 + Million
Tourque motor	Higher



Flap Barrier | NS-FS9-V120



Technical Specifications

Motor	Brush/ Brushless DC Motor optional
Mechanism	Half Height Flap Gate Mechanism
Back up power	Supercapacitor (12V/3A)
Sensor	3 pairs of active infrared intrusion detector

Technical Specifications

Product Size	1200*280*960mm
Material	SUS 304 stainless steel
Thickness	Top:1.2mm+body1.0mm
Pass Width	550MM
Passage Direction	Single directional/Bi-directional
Throughput Rate	30p/m
Reaction Time	0.2S
Acoustic Alarm	Buzzer Alarm (optional)
LED	Single/ Triple color LED (optional)
Weight	≤60 kg
IP Rating	44
MCBF	6 + Million
Torque motor	Higher
Driving Voltage	DC24V 4.2A
Power Input	AC110~220V±10%
Working Temperature	-20~+70 C
Indication	LED direction indication



Technical Specifications

Sensor	3 pairs of active infrared intrusion detector
Motor	Brush/ Brushless DC Motor
Mechanism	Half Height Flap Gate Mechanism
Back up power	Supercapacitor (12V/3A)
Indication	LED direction indication

Flap Barrier | NS-FS9-V110

Technical Specifications

Product Size	1200*280*960mm
Material	SUS 304 stainless steel
Thickness	Top:1.2mm+body1.0mm
Pass Width	550MM
Passage Direction	Single directional/Bi-directional
Throughput Rate	30p/m
Reaction Time	0.2S
Acoustic Alarm	Buzzer Alarm (optional)
LED	Single/ Triple color LED (optional)
Weight	≤ 60 kg
IP Rating	44
MCBF	6 + Million
Torque motor	Higher
Driving Voltage	DC24V 4.2A
Power Input	AC110~220V±10%
Working Temperature	-20~+70 C

Flap Barrier | NS-FS9-V210



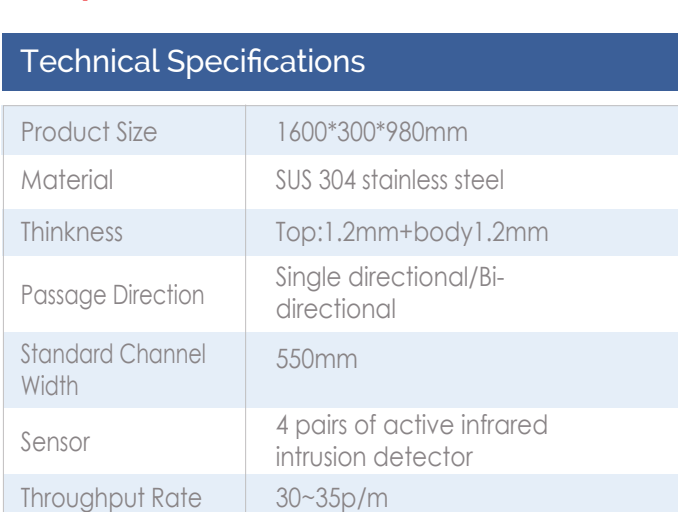
Technical Specifications

Working Temperature	-20~+70 C
Sensor	3 pairs of active infrared intrusion detector
Motor	Brushless DC Motor
Mechanism	Half Height Flap Gate Mechanism

Technical Specifications

Product Size	1400*300*1000mm
Material	SUS 304 stainless steel
Thickness	Top:1.5mm+body1.2mm
Pass Width	550mm
Passage Direction	Single directional/Bi-directional
Throughput Rate	30~35p/m
Reaction Time	0.2S
Acoustic Alarm	Buzzer Alarm
LED	Triple Color LED
Driving Voltage	DC24V 6.25A
Power Input	AC110~220V±10%
Weight	≤ 60 kg
IP Rating	44
MCBF	6 + Million
Tourque motor	Higher
Back up power	Supercapacitor (12V/3A)
Indication	LED direction indication

Flap Barrier | NS-FS9-V230



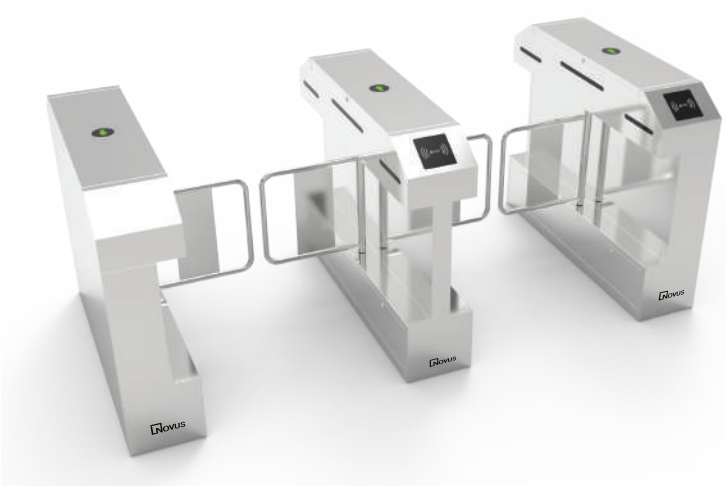
Technical Specifications

Product Size	1600*300*980mm
Material	SUS 304 stainless steel
Thickness	Top:1.2mm+body1.2mm
Passage Direction	Single directional/Bi-directional
Standard Channel Width	550mm
Sensor	4 pairs of active infrared intrusion detector
Throughput Rate	30~35p/m
Reaction Time	0.2S
IP Rating	44
Weight	≤ 60 kg
Tourque motor	Higher
Back up power	Supercapacitor (12V/3A)
Acoustic Alarm	Buzzer Alarm
LED	Triple Color LED
MCBF	6 + Million

Technical Specifications

Driving Voltage	DC24V 4.2A
Working Temperature	-20~+70 C
Power Input	AC110~220V±10%
Motor	Brushless DC Motor
Mechanism	Full Height Flap Gate Mechanism

Swing Barrier | NS-SS9-V110



Technical Specifications

Power Input	AC110~220V±10%
Working Temperature	-20~+70 C
Sensor	4 pairs of active infrared intrusion detector

Technical Specifications

Product Size	1200*280*960mm
Material	SUS 304 stainless steel
Thickness	Top:1.2mm+body1.0mm
Pass Width	600mm (≤1200mm optional)
Passage Direction	Single directional/Bi-directional
Throughput Rate	30p/m
Reaction Time	0.2S
Acoustic Alarm	Buzzer Alarm
LED	Single/ Triple color LED (optional)
Weight	≤ 60 kg
IP Rating	44
MCBF	6 + Million
Tourque motor	Higher
Motor	Brushless DC Motor
Mechanism	Brushless Anti-collision Integrated Mechanism
Back up power	Supercapacitor (12V/3A)
Indication	LED direction indication
Driving Voltage	DC24V 6.25A

Swing Turnstile | NS-SS9-V120

Technical Specifications

Product Size	1200*185*980mm
Material	SUS 304 stainless steel
Thickness	1.2mm+1.0mm
Pass Width	600mm
Passage Direction	Single directional / Bi-directional
Throughput Rate	25~30p/m
Reaction Time	0.2S
Acoustic Alarm	Buzzer Alarm
LED	Triple Color LED
Weight	≤ 60 kg
IP Rating	44
MCBF	6 + Million
Tourque motor	Higher
Motor	Brushless DC Motor
Mechanism	Brushless Anti-collision Integrated Mechanism
Back up power	Supercapacitor (12V/3A)
Indication	LED direction indication



Technical Specifications

Driving Voltage	DC24V 6.25A
Power Input	AC110~220V±10%
Working Temperature	-20~+70 C
Sensor	4 pairs of active infrared intrusion detector

Swing Barrier | NS-SS9-V220



Technical Specifications

Driving Voltage	DC24V 6.25A
Power Input	AC110~220V±10%
Working Temperature	-20~+70 C
Sensor	4 pairs of active infrared intrusion detector

Technical Specifications

Product Size	1400*180*1000mm
Material	SPCC
Thickness	1.2mm
Pass Width	600mm (≤800mm optional)
Passage Direction	Single directional/ Bi-directional
Throughput Rate	25~30p/m
Reaction Time	0.2S
Acoustic Alarm	Buzzer Alarm
LED	Triple Color LED
Weight	≤ 60 kg
IP Rating	44
MCBF	6 + Million
Tourque motor	Higher
Motor	Brushless DC Motor
Mechanism	Brushless anti-collision integrated mechanism
Back up power	Supercapacitor (12V/3A)
Indication	LED direction indication

Swing Barrier | NS-SS9-V210

Technical Specifications

Driving Voltage	DC24V 6.25A
Power Input	AC110~220V±10%
Working Temperature	-20~+70 C
Sensor	4 pairs of active infrared intrusion detector
Motor	Brushless DC Motor
Mechanism	Brushless Anti-collision Integrated Mechanism
Back up power	Supercapacitor (12V/3A)
Indication	LED direction indication
Weight	≤ 60 kg
IP Rating	44
MCBF	6 + Million
Tourque motor	Higher
Throughput Rate	25~30p/m
Reaction Time	0.2S



Technical Specifications

Product Size	1400*185*1020mm
Material	SUS 304 stainless steel
Thickness	Top:1.5mm+body1.2mm
Pass Width	600mm (≤900mm optional)
Passage Direction	Single directional / Bi-directional
Acoustic Alarm	Buzzer Alarm
LED	Triple Color LED

Swing Barrier | NS-SS9-V225



Technical Specifications

Back up power	Supercapacitor (12V/3A)
Indication	LED direction indication
Weight	≤ 60 kg
IP Rating	44
MCBF	6 + Million
Tourque motor	Higher

Technical Specifications

Weight	≤ 60 kg
IP Rating	44
MCBF	6 + Million
Tourque motor	Higher
Passage Direction	Single directional/ Bi-directional
Throughput Rate	40p/m
Reaction Time	0.2S
Acoustic Alarm	Buzzer Alarm
LED	Triple Color LED
Driving Voltage	DC24V 6.25A
Power Input	AC110~220V±10%
Working Temperature	-20~+70 C
Sensor	4 pairs of active infrared intrusion detector
Motor	Brushless Servo Motor
Mechanism	Brushless Speed Gate Mechanism

Technical Specifications

Product Size	1200*250*1050mm
Material	SPCC
Thickness	1.2mm
Pass Width	600mm
Passage Direction	Single directional/ Bi-directional
Throughput Rate	20~25p/m
Reaction Time	0.2S
Acoustic Alarm	Buzzer Alarm
LED	Triple Color LED
Driving Voltage	DC24V
Power Input	AC110~220V±10%
Working Temperature	-20~+70 C
Sensor	4 pairs of active infrared intrusion detector
Motor	Brushless DC Motor
Mechanism	Brushless Anti-collision Integrated Mechanism

Speed Barrier | NS-SS9-V230



Technical Specifications

Product Size	1500*100*1000mm
Material	SUS 304 stainless steel
Thickness	Top:1.5mm+body1.2mm
Pass Width	600mm (≤900mm optional)
Indication	LED direction indication
Back up power	Supercapacitor (12V/3A)

Speed Barrier | NS-SS9-V240



Technical Specifications

Product Size	1500*120*1000mm
Material	SUS 304 stainless steel; vacuum plating
Thickenss	1.5mm (≤900mm optional)
Passage Direction	Single directional / Bi-directional
Passage Width	600mm
Throughput Rate	40p/m
Reaction Time	0.2S
Driving Voltage	DC24V 6.25A
LED	Triple Color LED
Weight	≤ 60 kg
IP Rating	44
MCBF	6 + Million
Tourque motor	Higher
Mechanism	Brushless Speed Gate Mechanism
Back up power	Supercapacitor (12V/3A)
Acoustic Alarm	Buzzer Alarm

Technical Specifications

Power Input	AC220V,50Hz
Power Input	AC110~220V±10%
Working Temperature	-20~+70 C
Sensor	4 pairs of active infrared intrusion detector
Motor	Brushless Servo Motor

Speed Gate | NS-SS9-V250



Technical Specifications

Product Size	single wing:1600*231*980mm dual wing: 1600*312*980mm
Material	SUS 304 stainless steel; vacuum plating
Thinkness	Top:1.2mm+body1.2mm
Passage Direction	Single directional/ Bi-directional
Standard Channel Width	600mm (≤900mm optional)
Sensor	5 pairs of active infrared intrusion detector
Throughput Rate	40p/m
Reaction Time	0.2S
Driving Voltage	DC24V 6.25A
Working Temperature	-20~+70 C
Power Input	AC110~220V±10%
Motor	Brushless Servo Motor
Mechanism	Brushless Speed Gate Mechanism
Back up power	Supercapacitor (12V/3A)

Technical Specifications

LED	Triple Color LED
Weight	≤ 60 kg
IP Rating	44
MCBF	6 + Million
Tourque motor	Higher
Acoustic Alarm	Buzzer Alarm

Swing Barrier | NS-SS9-V260

Technical Specifications

Product Size	1600*150*980mm
Material	SUS 304 stainless steel
Thickness	Top:1.2mm+body1.2mm
Passage Direction	Single directional/ Bi-directional
Standard Channel Width	600mm (≤900mm optional)
Sensor	5 pairs of active infrared intrusion detector
Throughput Rate	40p/m
Reaction Time	0.2S
Driving Voltage	DC24V 6.25A
Working Temperature	-20~+70 C
Power Input	AC110~220V±10%
Motor	Brushless Servo Motor
Mechanism	Brushless Speed Gate Mechanism



Technical Specifications

Back up power	Supercapacitor (12V/3A)
Acoustic Alarm	Buzzer Alarm
LED	Triple Color LED
Weight	≤ 60 kg
IP Rating	44
MCBF	6 + Million
Torque motor	Higher



ULTRA PREMIUM

SWING \ TURNSTILE GATE



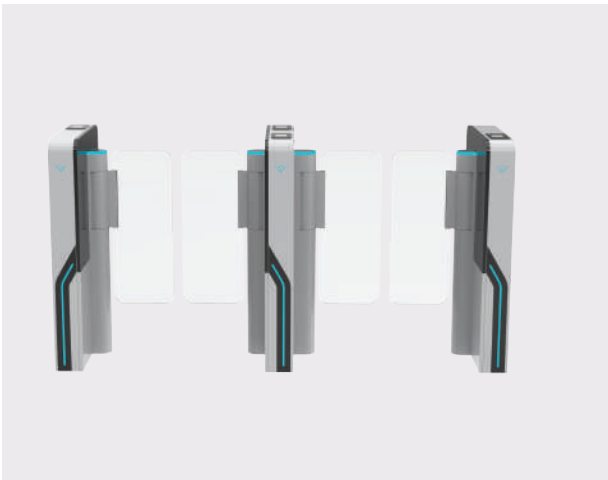
Swing Gate | NS-SS6-UT610



Technical Specifications

Size	1500*120*980mm
Material	1.5mm imported SUS Polish 400 # Snow line + Top Cover: 12mm man made marble + Filling Panel: 10mm Acrylic with Led light bar
Infrared sensor	8 pairs
Pass Width	600~900mm
Pass rate	35 p/m
Operating time	0.2 Seconds
Input	100-240V; 50/60HZ
Motor	Servo Brushless Motor
Communication interface	RS485, Dry contact
IP Rating	44

Swing Gate | NS-SS6-UT310



Technical Specifications

Size	600*130*980mm
Material	1.5mm cold rolling sheet with painting
Infrared sensor	4 pairs
Pass rate	35 p/m
Pass width	600~900mm
Input	AC100-240V
Motor	DC Brushless Motor
Working Temperature	-20-70℃
Motor power	150W
Communication interface	RS485, Dry contact
IP Rating	44

Swing Gate | NS-SS6-UT1112



Technical Specifications

Size	1700*200*1000mm
Material	2.0mm cold rolling sheet with painting
Infrared sensor	14 pairs
Working Temperature:	-20-70 ℃
Motor	Servo Brushless Motor
Pass rate	35 p/m
Pass width	600mm
Motor power	100W
Input	AC100-240V
Communication interface	RS485, Dry contact
IP Rating	44

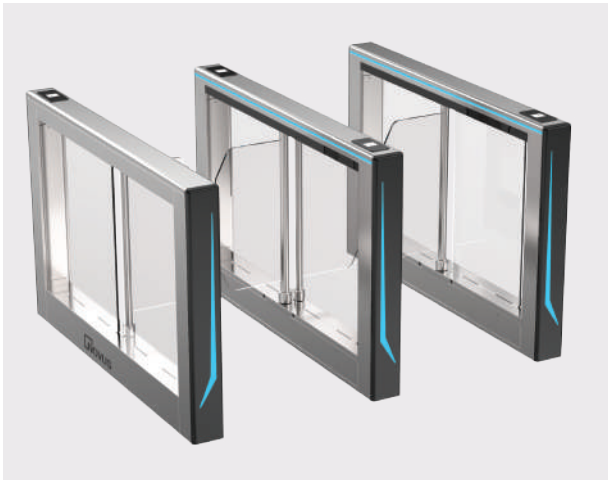
Swing Gate | NS-SS6-UT110



Technical Specifications

Size	1500*120*980mm
Material	2.0mm 6 series aluminum alloy
Infrared sensor	Light curtain 28 points
Pass rate	35 p/m
Pass width	600~900mm
Input	AC100-240V
Motor	Servo Brushless Motor
Working Temperature	-20-70℃
Motor power	500W
Communication interface	RS485, Dry contact.
IP Rating	44

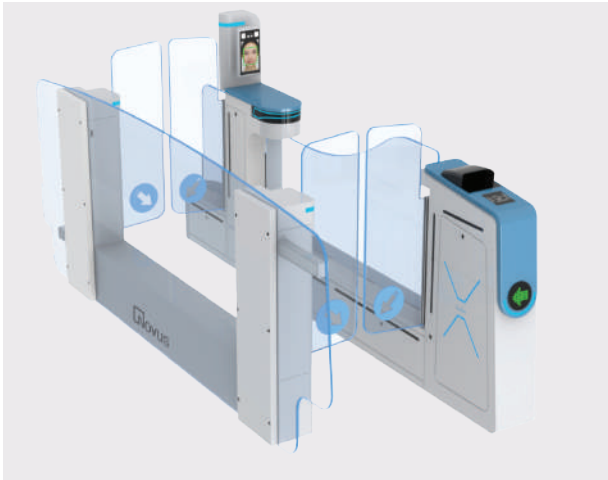
Swing Gate | NS-SS6-UT210



Technical Specifications

Size	1500*130*980mm
Material	1.5mm imported SUS 304 Polish 400# Snow line
Infrared sensor	Light curtain 28 points
Pass rate	35 p/m
Pass width	600~900mm
Input	AC100-240V
Motor	Servo Brushless Motor
Working Temperature	-20-70℃
Motor power	500W
Communication interface	RS485, Dry contact.
IP Rating	44

Swing Gate | NS-SLS6-UT110



Technical Specifications

Size	2700*200*1300mm
Material	2.0mm cold rolling sheet with painting
Infrared sensor	17 pairs
Working Temperature	-20-70℃
Pass rate	35 p/m
Pass width	600mm
Input	AC100-240V
Motor	Servo Motor
Motor power	100W
Communication interface	RS485, Dry contact
IP Rating	44

Swing Gate | NS-SLS6-UT110



Technical Specifications	
Size	1500*300*980mm
Material	2.0mm imported SUS304 Polish 400# Snow line + Top cover: 12mm white man made marble +
Housing	10 mm Tempered glass + Door: 10 mm Tempered glass
Infrared sensor	9 pairs
Pass rate	35 p/m
Pass width	<=550mm
Operating time	0.2 Seconds
Input	100-240V; 50/60HZ
Motor	Servo Brushless Motor
Communication interface	RS485, Dry contact
IP Rating	44

Swing Gate | NS-SS6-UT710



Technical Specifications	
Size	1400*150*980mm
Material	2.0mm cold rolling sheet with painting
Infrared sensor	8 pairs
Pass rate	35 p/m
Pass width	600~900mm
Input	AC100-240V
Motor	Servo Brushless Motor
Working Temperature	-20-70°C
Motor power	500W
Communication interface	RS485, Dry contact
IP Rating	44

Slide Gate | NS-SLS6-UT210



Technical Specifications	
Size	Top cover 1.5mm + cabinet 1.2mm SUS 304 Hairline 400#
Material	5 pairs
Infrared sensor	35 p/m
Pass rate	<=550mm
Pass width	AC100-240V
Input	DC brush Motor
Motor	-20-70°C
Working Temperature	30W
Motor power	RS485, Dry contact
Communication interface	44
IP Rating	

Slide Gate | NS-SLS6-UT310



Technical Specifications

Size	1400*300*980mm
Material	Cabinet 1.2mm SUS304 Hailine 400# + Top
Infrared sensor	5 pairs
Cover	12mm man-made marble
Infrared sensor	5 pairs
Pass rate	35 p/m
Pass width	<=600mm
Operating time	0.2 Seconds
Input	100-240V; 50/60HZ
Motor	DC brush motor
Communication interface	RS485, Dry contact
IP Rating	44

Swing Gate | NS-SS6-UT410



Technical Specifications

Size	1500*150*980mm
Material	1.5mm imported SUS 304 Polish 400# Snow line + Top Cover: Acrylic and 1.5mm SUS + Filling Panel: 10mm Acrylic with Led light bar
Infrared sensor	8 pairs
Pass width	600~900mm
Pass rate	35 p/m
Operating time	0.2 Seconds
Input	100-240V; 50/60HZ
Motor	Servo Brushless Motor
Communication interface	RS485, Dry Contact.
IP Rating	44

Swing Gate | NS-SS6-UT510



Technical Specifications

Size	1500*100*980mm
Material	1.5mm imported SUS Polish 400# Snow line + Top Cover: Acrylic and 1.5mm SUS + Filling Panel: 10mm Acrylic with Led light bar
Infrared sensor	8 pairs
Pass width	600~900mm
Pass rate	35 p/m
Operating time	0.2 Seconds
Input	100-240V; 50/60HZ
Communication interface	RS485, Dry Contact
Motor	Servo Brushless Motor
IP Rating	44

Swing Gate | NS-SS6-UT612



Technical Specifications

Size	1500*120*980mm
Material	1.5mm imported SUS Polish 400# Snow line + Top Cover: 12mm man made marble + Filling Panel: 10mm Acrylic with Led light bar
Infrared sensor	8 pairs
Pass width	600~900mm
Pass rate	35 p/m
Operating time	0.2 Seconds
Input	100-240V; 50/60HZ
Communication interface	RS485, Dry Contact
Motor	Servo Brushless Motor
IP Rating	44

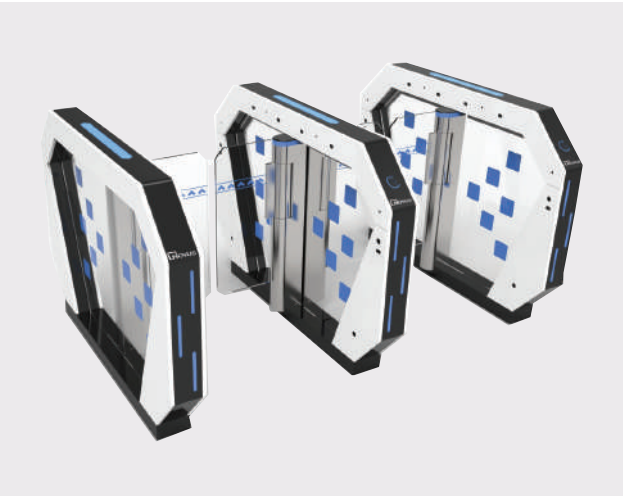
Swing Gate | NS-SS6-UT810



Technical Specifications

Size	1500*120*980mm
Material	2.0mm cold rolling sheet with painting
Infrared sensor	5 pairs
Pass rate	35 p/m
Working Temperature	-20-70 C
Pass width	600~900mm
Input	AC100-240V
Motor	DC Brushless Motor
Motor power	150W
Communication interface	RS485, Dry contact
IP Rating	44

Swing Gate | NS-SS6-UT910



Technical Specifications

Size	1400*140*1000mm
Material	2.0mm cold roller Steel with US powered coating + Filling Panel: 10mm Acrylic with Led light bar
Infrared sensor	8 pairs
Pass width	<=900mm
Pass rate	35 p/m
Operating time	0.2 Seconds
Input	100-240V; 50/60HZ
Communication interface	RS485, Dry contact
Motor	Servo Brushless Motor
IP Rating	44

Swing Gate | NS-SS6-UT1010



Technical Specifications	
Size	1400*120*980mm
Material	2.0mm cold roller Steel with US powered coating + Filling Panel: 10mm Acrylic with Led light bar
Infrared sensor	8 pairs
Motor	Servo Brushless Motor
Pass width	<=900mm
Pass rate	35 p/m
Input	100-240V; 50/60HZ
Operating time	0.2 Seconds
Communication interface	RS485, Dry contact
IP Rating	44

Swing Gate | NS-SS6-UT1110



Technical Specifications	
Size	1500*150*1000mm
Material	2.0mm imported SUS304 Polish 400# Snow line + Top Cover: 12mm white man made marble
Infrared sensor	12 pairs
Pass width	<=600mm
Pass rate	35 p/m
Operating time	0.2 Seconds
Input	100-240V; 50/60HZ
Communication interface	RS485, Dry Contact
Motor	Servo Brushless Motor
IP Rating	44

Swing Gate | NS-SS6-UT1111



Technical Specifications	
Size	1700*200*1035mm
Material	2.0mm cold rolling sheet with painting
Infrared sensor	14 pairs
Working Temperature:	-20-70°C
Pass rate	35 p/m
Pass width	600mm
Motor power	100W
Input	AC100-240V
Communication interface	RS485, Dry contact
Motor	Servo Brushless Motor
IP Rating	44

Swing Gate | NS-SS6-UT1113



Technical Specifications

Size	1500*150*980mm
Material	Top cover 1.5mm + housing 1.2mm SUS 304 Hairline 400#
Infrared sensor	6 pairs
Pass width	600~900mm
Pass rate	35 p/m
Operating time	0.2 Seconds
Input	AC100-240V
Communication interface	RS485, Dry Contact
Motor	Servo Brushless Motor
Motor Power	100W
Working Temperature	-20-70°C
IP Rating	44

Swing Gate | NS-SS6-UT1114



Technical Specifications

Size	1400*185*1020mm
Material	Top Cover 1.5mm + Cabinet 1.2mm SUS 304 Hailine 400#, Filling Panel 10.0mm Acrylic
Infrared sensor	5 pairs
Motor	DC Brushless motor
Pass rate	35 p/m
Pass width	600~900mm
Operating time	0.2 Seconds
Input	100-240V; 50/60HZ
Communication interface	RS485, Dry contact
Working voltage	24V; Motor power: 20W
IP Rating	44

Swing Gate | NS-SS6-UT1115



Technical Specifications

Size	1500*150*980mm
Material	Cabinet: 1.2mm SUS 304 Hailine 400# + Top
Cover	1.5mm SUS 304
Infrared sensor	14 pairs
Pass rate	35 p/m
Pass width	600~1100mm
Operating time	0.2 Seconds
Input	100-240V; 50/60HZ
Motor	DC Brushless motor
Communication interface	RS485, Dry contact
IP Rating	44

Swing Gate | NS-SS6-UT1116



Technical Specifications

Size	1500*100*980mm
Material	Cabinet 0.8mm SUS 304 Hairline #400 + Topcover 1.2mm SUS 304
Infrared sensor	6 pairs
Pass rate	35 p/m
Pass width	600~900mm
Input	100-240V; 50/60HZ
Motor	DC Brushless motor
Communication interface	RS485, Dry contact
Operating time	0.2 Seconds
IP Rating	44

Swing Gate | NS-SS6-UT1117



Technical Specifications

Size	1500*150*980mm
Material	Cabinet: 1.2mm SUS 304 Hairline 400# + Top
Infrared sensor	4 pairs
Pass rate	35 p/m
Pass width	600~900mm
Input	100-240V; 50/60HZ
Motor	Servo Brushless Motor
Cover	1.2mm SUS 304
Operating time	0.2 Seconds
Communication interface	RS485, Dry contact
IP Rating	44

Swing Gate | NS-SS6-UT2100



Technical Specifications

Size	¢ 168x1000mm
Material	2.0mm SUS 304
Driving voltage	24V
Pass rate	35 p/m
Pass width	<=900mm
Input	100V~240V
Motor	Servo Brushless Motor
Environment	-25- 70 C
Communication interface	RS485, Dry Contact
IP Rating	44

Swing Gate | NS-SS6-UT2200



Technical Specifications

Size	200*200*980mm
Material	Cabinet 1.0mm SUS 304 Hairline #400 + Top cover 1.2mm SUS 304
Pass rate	35 p/m
Pass width	600~900mm
Input	100-240V; 50/60HZ
Motor	DC Brushless motor
Communication interface	RS485, Dry Contact
Operating time	0.2 Seconds
IP Rating	44

Clients and Partners

We take pride in building long-lasting relationships with our clients and partners, based on trust, transparency, and mutual respect. We understand that our clients are the reason we exist, and we strive to provide them with the highest level of service and support. Our goal is to exceed our client's expectations and deliver innovative solutions that meet their unique needs.

User & Clients



Partners



VIII. Certifications and Awards



YOUR BUSINESS GROWTH IS OUR CONCERN



Address

REGISTERED OFFICE (DELHI/ NCR)

E 58, Preet Vihar,
New Delhi, 110092

BRANCH OFFICES (DELHI/NCR)

B-418, Tower - B, Plot no. - A - 40
Ithum Tower , Sector - 62, Noida,
201301 (UP)

+91 -729-004-4421

www.novusapl.com